

Photo Estimating Instructions

*Please ensure all photos are visible and clear before emailing to the shop

*Please have the vehicle washed before taking pictures. This makes the damage easier to see which results in a more accurate estimate

*Use the following pictures as a reference

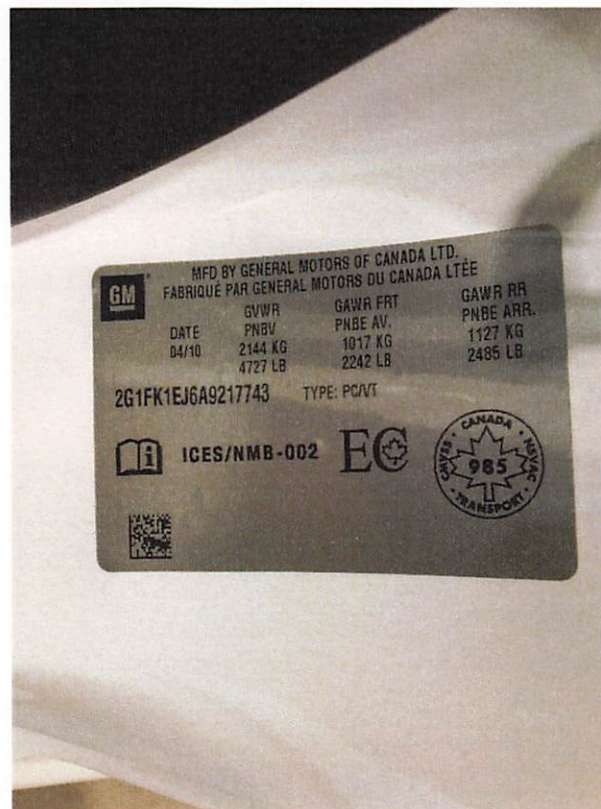
- Take a picture of the instrument cluster with the vehicle running and the driver's door closed. This shows any Diagnostic Trouble Codes on the dash. Zooming in on the odometer helps us see the millage.



- Next, we need pictures of inside the vehicle, through the driver and passenger door.



- Followed by a picture of the VIN. This sticker is normally located inside the driver door jamb



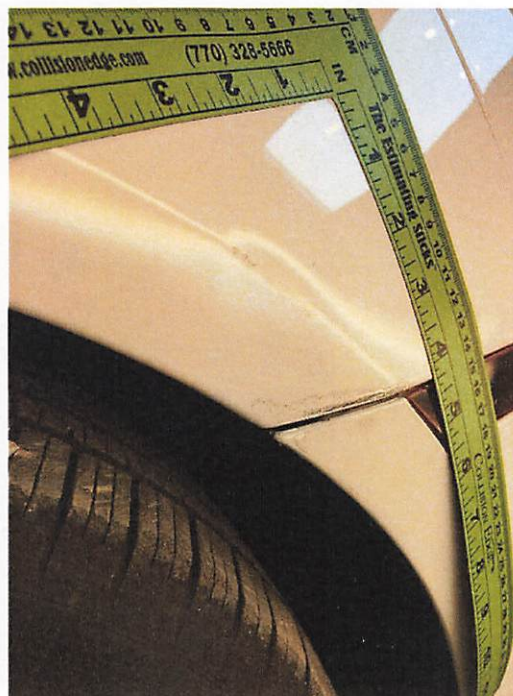
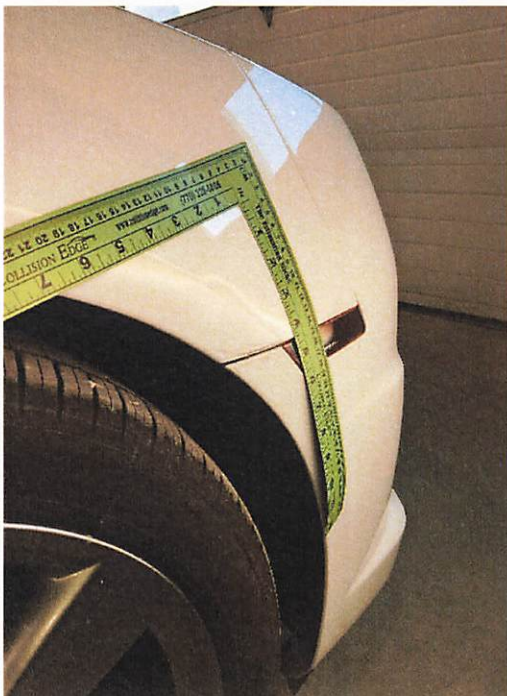
- The next few pictures are for us to view the overall general condition of the vehicle. Focus on taking pictures on all 4 corners of the vehicle, plus the front and back.



- Next, we need pictures of the damage. The best way to do this is to take a picture of the damage from a distance first so we can tell where it is on the vehicle.



- Now you can get closer to the damage to pick up on details. Use light to your advantage so we can see warpage of metal, scratches in the paint or cracks in metal or plastic. We suggest taking a couple pictures at different angles in order to properly view the damage. Pointing to broken parts also lets us know



- Once you have taken the pictures, email them to us at ab.autobody@sasktel.net
- Feel free to add additional notes in the email to aid us in assessing the damages to your vehicle.
- If you have any questions feel free to email or call us at (306)-525-8304